



EDUCATION & TRAINING



WHY TO GROUT

This training will take approximately 1.5 hours and will teach your team the reasons to grout your equipment properly. In this session, you will learn the case history of equipment grouting and also the standards that are available for your use. There is also a small segment on proper grout installation to help understand the importance of good practices and good materials. "Why to grout" is geared toward engineers, maintenance and plant process teams.

HOW TO GROUT

In this 1.5 hour classroom session, you will learn all of the installation steps required for a successful equipment grout installation. There will be a small segment of why to grout properly so the installer can understand the owners position. The session will also teach the tips and tricks of the field installation that may not be normally included in manufacturer's literature. "How to grout" is geared toward equipment installers and maintenance teams.

ANCHOR BOLTS

This training will take approximately 1.5 hours and will teach your team the reasons to anchor your equipment properly. In this session, you will learn different design configurations for both the anchor bolts and the foundation, to ensure alignment and extend MTBF.

EQUIPMENT FOUNDATION SCHOOL (1 DAY)

This training combines classroom sessions of the above trainings, plus hands-on application sessions for anchor bolts, mixing and pouring grout, and in-field checkpoints. We host this at our location or can bring it to you.

CHOCKFAST® MARINE CERTIFIED INSTALLER

The Chockfast® Marine Certified Installer Training program is designed to assist installers, inspectors, and engineers with the proper design and installation of epoxy chocking compounds in marine applications. With a focus on ship-based propulsion and power machinery, the training provides both theoretical and hands-on training around the proper usage of epoxy chocking compounds. This schedule can be, and often is, easily adjusted and rearranged to respond to the needs of the attendees. The course includes approximately 10-12 hours of classroom training, 3-4 hours of hands-on training, practical problems, and a final exam.



ABOUT US

Founded in the 1970s, Techmar has been providing time-tested, equipment foundation solutions to its clients for over 40 years. Along with following industry standards and best practices, the founders of Techmar pioneered the deep-pour method, providing an innovative solution that has been adapted across the country.

We have helped bring these principles to numerous industries such as Oil & Gas, Petrochemical, Chemical, Food & Beverage, Marine, and Ethanol. Our clients are satisfied with lowered vibration data, higher reliability, maintained alignment, and lowered maintenance costs that result from a monolithic foundation.

STAFF QUALIFICATIONS

PROFESSIONAL ENGINEERS

NACE CIP LEVEL III INSPECTORS

SSPC CCI LEVEL II INSPECTORS

ISO 18436-2 VIBRATION ANALYSTS

CHOCKFAST MARINE CERTIFIED

CONTACT US



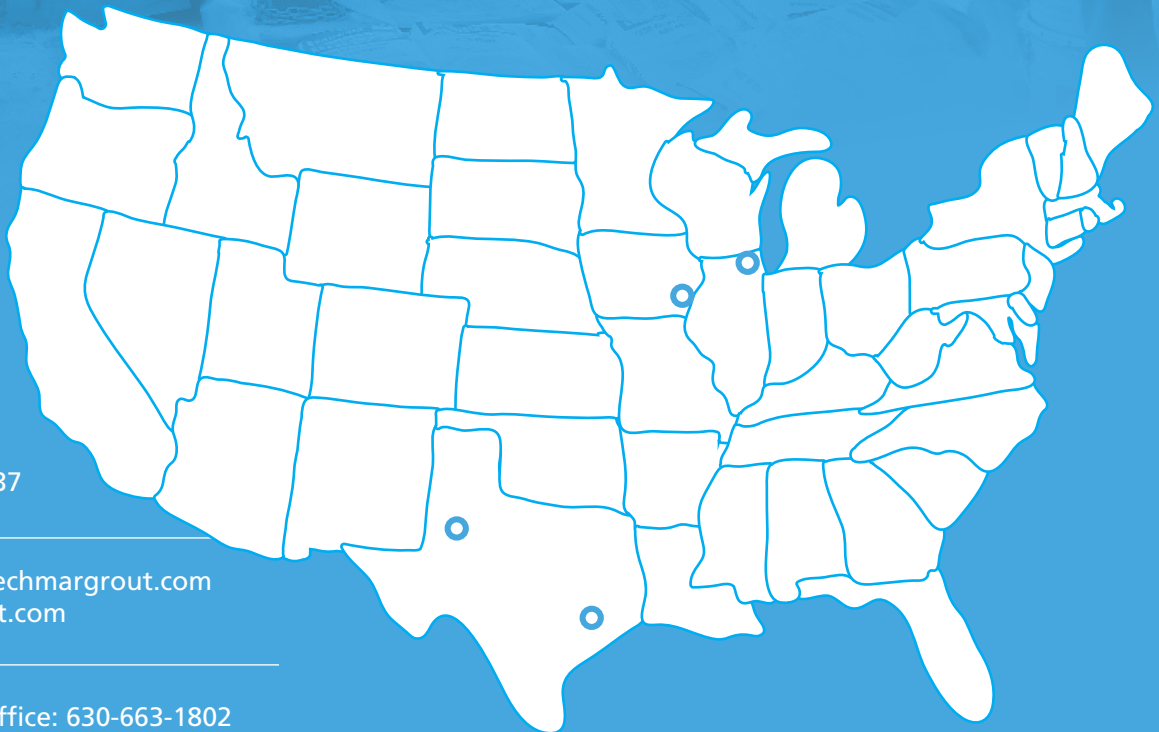
20443 Hwy 99
Mediapolis, IA 52637



customerservice@techmargrout.com
www.techmargrout.com

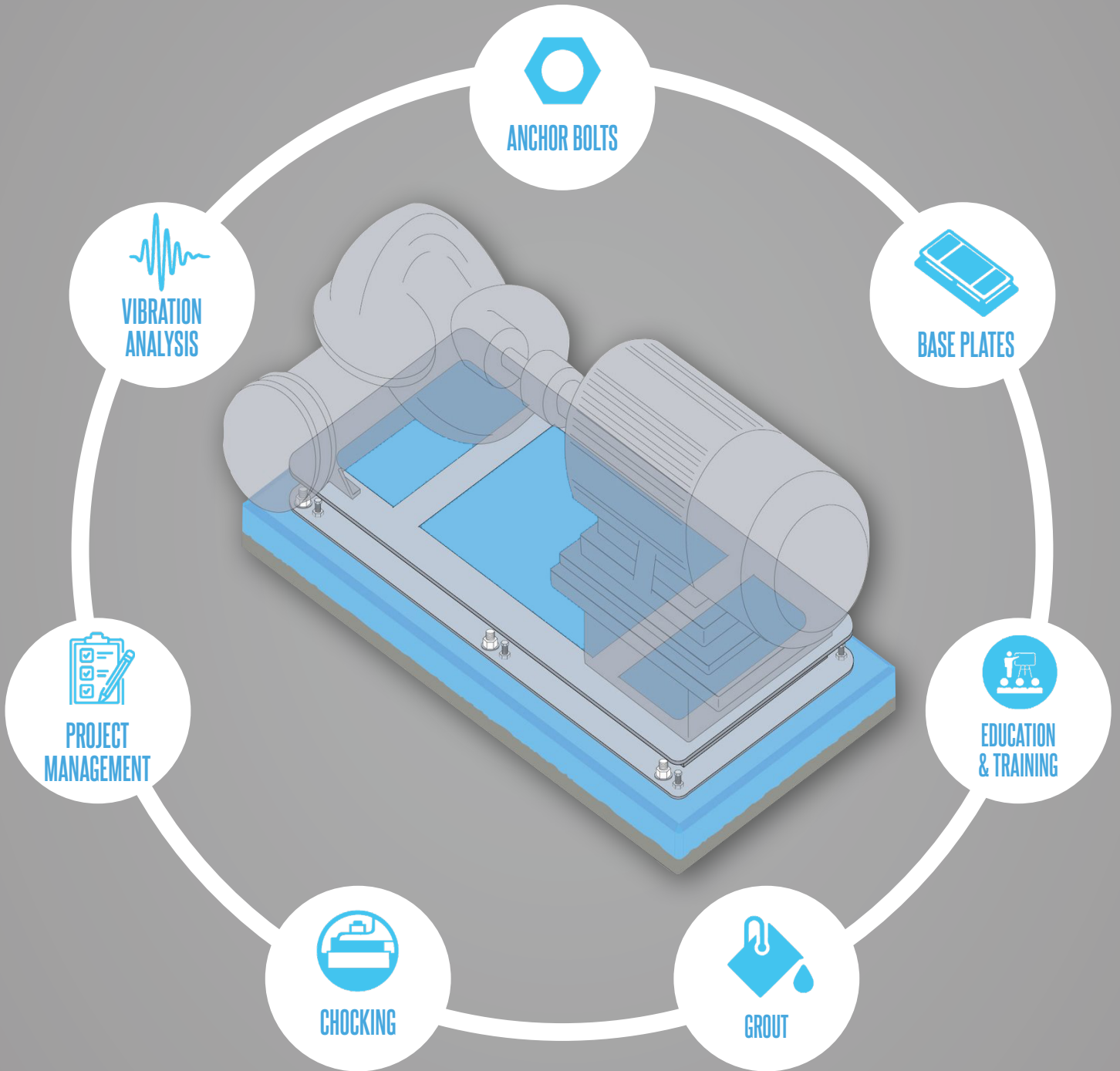


Midwest/Eastern Office: 630-663-1802
Southern Office: 713-955-6854



TECHMAR™

EQUIPMENT FOUNDATION SYSTEMS



Midwest/Eastern Office: 630-663-1802
Southern Office: 713-955-6854



customerservice@techmargrout.com
www.techmargrout.com



20443 Hwy 99
Mediapolis, IA 52637



GROUT



GROUT WITH A GOAL IN MIND. ON A TIMELINE THAT WORKS FOR YOU

Maybe you have to grout in something with a static load. We have cementitious grout that is certified by the Army Corp of Engineers for that. And rapidly hydrating bagged goods.

But when it comes to equipment with dynamic forces, they require different grouting solutions. Entire industries have mandated the use of epoxy grouts in rotating and reciprocating equipment because of its proven track record. We use grouting “best practices” and standards from the American Petroleum Institute that have reduced equipment maintenance costs for decades.

3-COMPONENT EPOXY GROUTS

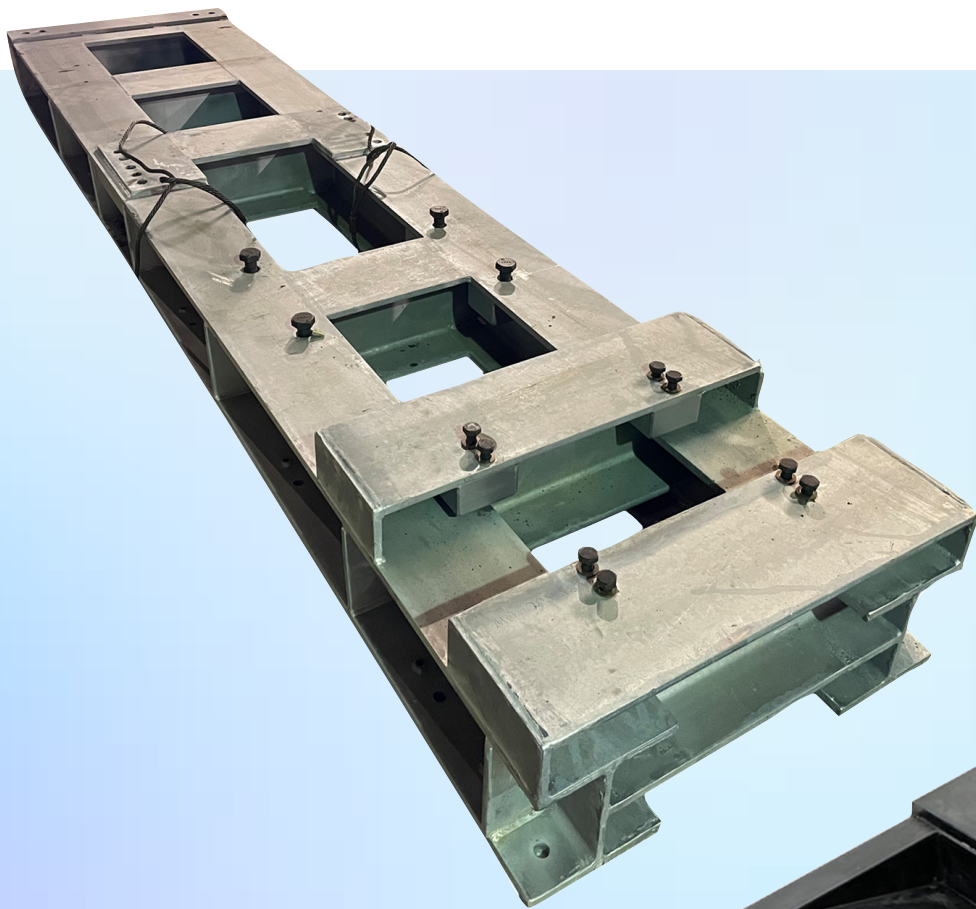
Chockfast Red	High strength, 100% solids epoxy grouting compound which is used to grout large machinery and to support soleplates. Ideal for final positioning of critically aligned equipment within close tolerances.
Chockfast Red SG	Thin Pour, Rapid Cure, High Strength Epoxy Grout.
Chockfast Red Versaflow	Optimized for pumping and flow properties. This versatile material is capable of low clearance, large area pours and is able to reach difficult to access locations. Pumping results in efficient delivery and lower cost of installation.
Escoweld® 7505E/7530	High Strength, Deep Pour, Very Fluid, Epoxy Grout for mounting precisely aligned equipment. Ideal for installing baseplate mounted pumps.

CEMENTITIOUS GROUT

ITW PRC 100	Non-shrink, precision cement-based grout that can be used in a wide range of consistencies from damp pack to high fluidity.
--------------------	---



BASE PLATES



**CUSTOM BASE
PLATES ARE
ABOUT MORE
THAN JUST SIZE**



Chemical attacks. Loose shims. Oil leaks. Product spills. Your base plates have to put up with a lot of abuse. Let us guide you to a base plate solution based on your goals and budget.

Whether it's a polymer or steel baseplate, it's important to consider all the little things such as preparation, bolt holes, vents, coating, adhesion, and the foundation underneath.



VIBRATION ANALYSIS

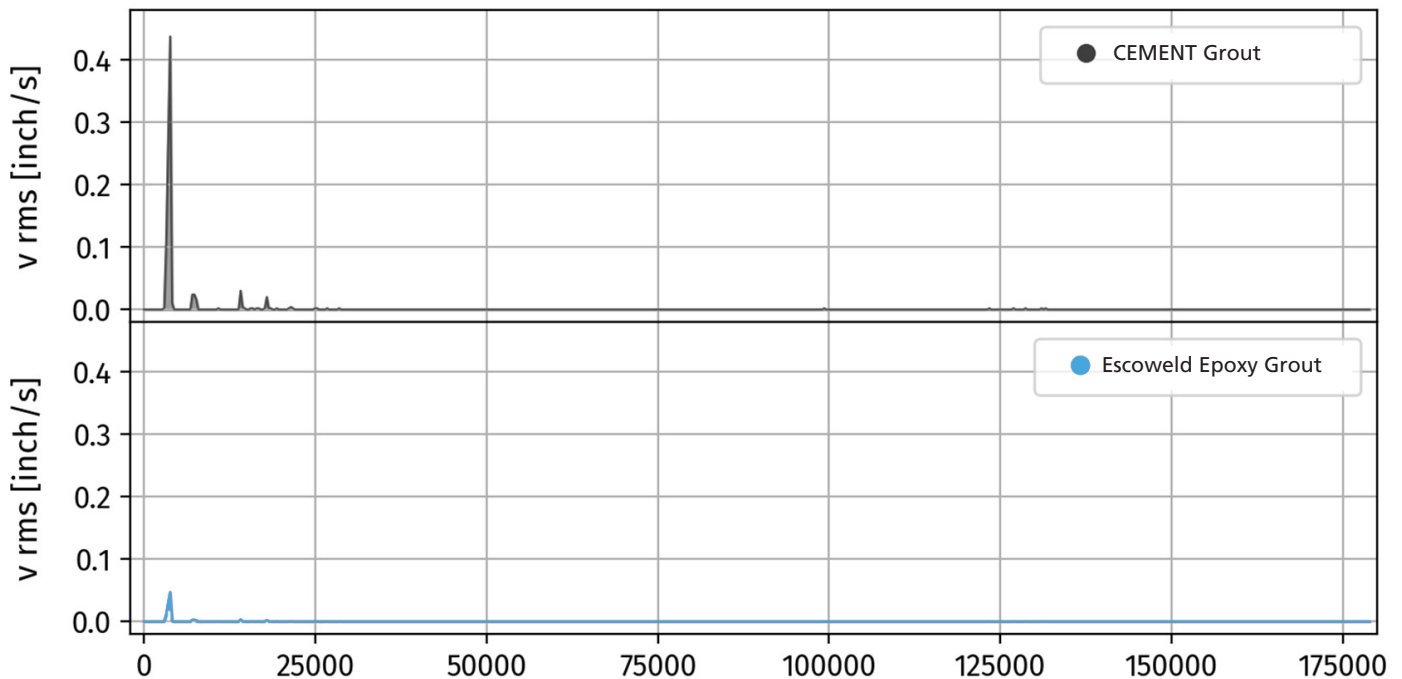
PROVEN RESULTS FROM CONSULTANTS WITH DECADES OF PROJECT MANAGEMENT EXPERIENCE

We have mechanical engineers willing to help with an equipment solution in all 50 states. Whether it's replacing a broken anchor bolt, regrouting a pump, or designing a new capital project A to Z, our consultants are qualified and willing to help. Let our ISO 18436-2 Certified Vibration analysts review your data.

Plus, our track record has delivered up to 97% vibration reduction for our clients. See how much following "best practices" will result in years of dependable equipment reliability.

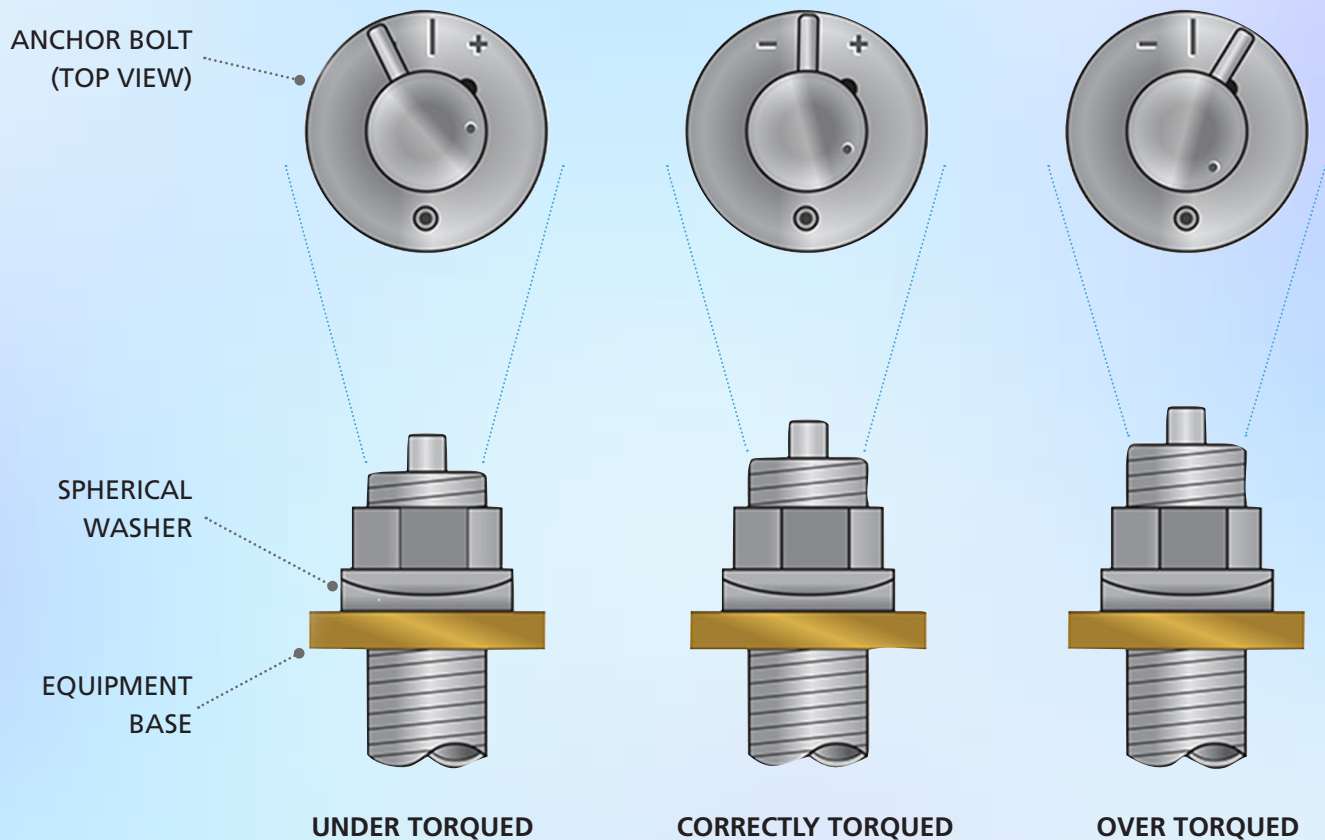


BEFORE & AFTER COMPARISON





ANCHOR BOLTS



Anchor bolts can break or fail from time to time, factors which can be traced back to improper installation or maintenance.

Techmar technicians can customize anchor bolt solutions from the beginning stages or help replace a current snapped or rusted bolt.

Give yourself peace of mind that your equipment is torqued and bolted correctly.

Various solutions include:

- Custom bolt metal strength, grades, diameters, lengths
- Spherical washers
- Optional tension-monitoring for precision stretch
- Metal, plastic, and retractable sleeves
- Leveling screws and pucks

**HAVE YOUR ANCHOR BOLTS TELL YOU
IF THEY ARE TORQUED CORRECTLY**



CHOCKING



A structural epoxy “chock” or “poured shim” can replace tediously fitted steel chocks or shims.

This allows intimate contact with machined or un-machined equipment bedplates. Techmar provides formulations that allow for virtually 100% effective bearing underneath supported equipment, including hot-running machinery, from ½” to 4” pours.

Chockfast Orange

Marine & Industrial Chocking Compound for Precisely Aligned Equipment with chocks of the same or variable thickness. Smooth flowing, epoxy that can be injected into very narrow areas.

Chockfast Black

High Temperature, Industrial Chocking Compound for Precisely Aligned Equipment with chocks of the same thickness. Viscous, gritty epoxy.

Chockfast Gray

General Purpose Chocking Compound for installing Non-Precisely Aligned Industrial or Marine Equipment or for installing anchor bolts.